



Sample Lesson Plan:

Occupational Guidance and Preparation. Competency 17: Knowing & Exploring Occupational Guidance and Preparation. Subcompetency. Identify remunerative aspects of work.

LESSON PLAN 8

17.70.3E:8

LCCE Objective 17.70.3. Discuss personal needs that are met through wages.

Lesson Objective: Students will identify major living expenses.

Instructional Resources: **Living Expenses Worksheet (Student Workbook pages 4 & 5).**

Lesson Introduction: Your first paycheck will look like a large amount of money. But you must remember that your pay must cover many types of living expenses.

School Activity:

Time: 1 session

Task:

1. Students work in small groups to identify categories for living expenses, for example, housing, transportation, clothing, etc. List the categories on the board.
2. Students determine whether each expense category is an essential expense (need) or a nonessential expense (luxury). Essential expenses include items that one must have to live as an adult, for example, rent, food, transportation, medical care, clothing, utilities, and insurance. Discuss the types of insurance needed by adults and the reasons for the insurance. Nonessential expenses include tapes, compact discs, movies, and restaurant meals.
3. Students consider the difference between essential (needs) and nonessential (luxuries) expenses in class and arrive at a consensus regarding essential expenses.
4. Students complete the **Living Expenses Worksheet (Student Workbook pages 4 & 5).**

Lesson Plan Evaluation:

Activity: Students will complete the **Living Expenses Worksheet.**

Criteria: Students will differentiate between essential and nonessential expenses and state three types of essential expenses.

Career Role: Employee

Career Stage: Exploration

Sample Worksheet

LIVING EXPENSES

Worksheet (Student Workbook)

Name _____

Date _____

Directions: After each picture write what it is or what it stands for (for example, the grocery cart stands for the food you buy in a grocery store). Then circle whether the item is an essential expense (Need = N) or nonessential expense (Luxury = L) for you.



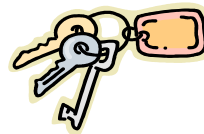
_____ N L



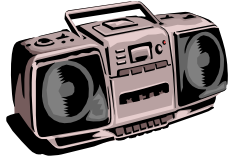
_____ N L



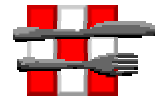
_____ N L



_____ N L



_____ N L



_____ N L



_____ N L



_____ N L



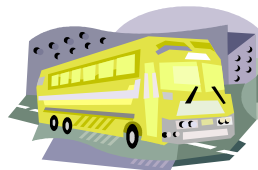
_____ N L



_____ N L



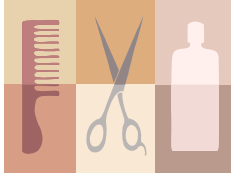
_____ N L



_____ N L

Name _____

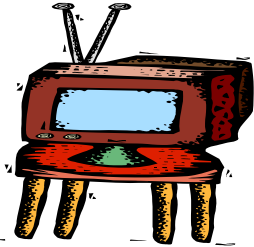
Date _____



_____ N L



_____ N L



_____ N L



_____ N L



_____ N L



_____ N L